



# HYGIENE MATTERS.

A NEW WAVE OF TECHNOLOGY.  
INTRODUCING THE FUTURE OF LAUNDRY TECHNOLOGY **THE GREAT WAVES™**

## TOSHIBA





## ABOUT US

Established in 1875, Toshiba, a Japanese multinational, is known for delivering technology and products that are known for their innovation and artistry. Contributing to a safer and more productive life, Toshiba believes in creating a better life in homes around the world. Toshiba has been enriching lives through innovative technologies in India for over 50 years. Resonating with its global corporate philosophy, Toshiba has been committed to delivering satisfaction to its customers.

**“Committed to People. Committed to the Future.”**

WITH TOSHIBA WASHING MACHINES.

Inspired by the famous Japanese painting 'The Great Wave of Kanagawa',  
this innovative technology is named

# THE GREATWAVES™

THE GREATWAVES™ technology is developed based on Flush Wave and  
ColdWash, which leads to a great saving and color protecting  
performance for laundry.

CLEAN

SAVE

PROTECT



# FLUSH WAVE

High washing speed generates Flush Wave, achieving the same cleaning effect as washing with hot water.

CATEGORY	WASHING SPEED
Conventional Front Loader	45~80 rpm
Conventional Front Loader with Flush Wave	80~150 rpm
TOSHIBA Front Loader with Flush Wave (GW)	150~200 rpm



## BETTER THAN HAND WASH

Combined with big cambered wing-type paddles and smooth inner drum, GREATWAVES technology generates the Flush Wave, which scrubs clothes during washing process to get the same cleaning effect as hand wash.



## GREATER THAN NORMAL FLOW

Unlike the normal flow, GREATWAVES technology can adjust rotation speed intelligently, which generates different types of Flush Waves, penetrating fabric to break and remove stubborn stains.



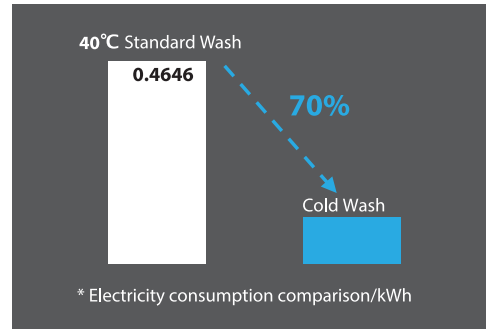
# COLD WASH

Cold Wash is developed based on Flush Wave as it can get 40°C standard wash cleaning effect without heating.



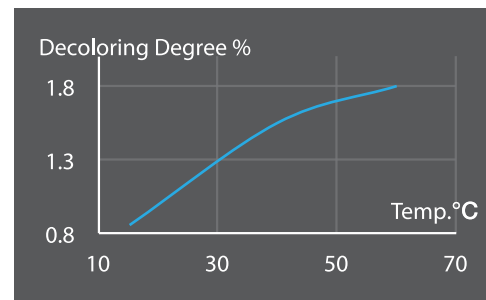
## ENERGY SAVING

GREATWAVES technology activates Cold Wash procedure, which can save up to 70% energy based on the same cleaning effect as 40°C standard wash according to lab experiments.

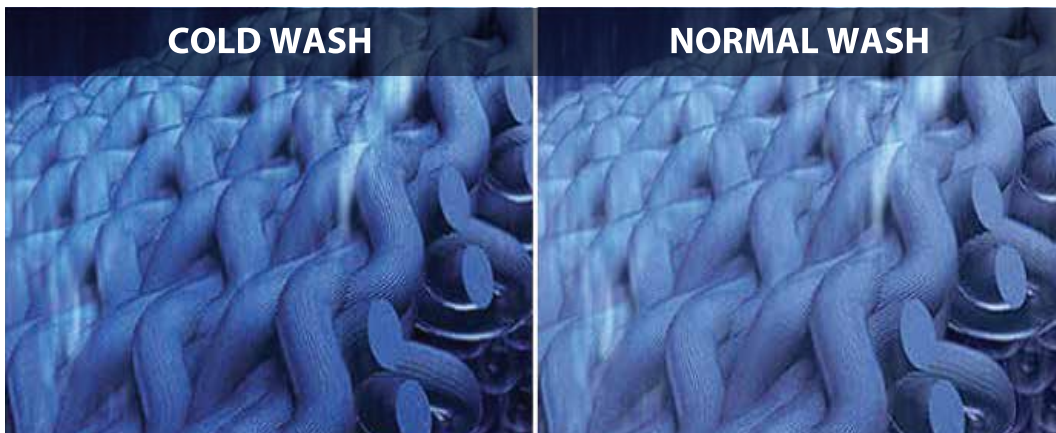


## COLOR PROTECTING

ColorAlive is developed based on Cold Wash which is remarkable at protecting color. Approved by the Household Electricity Appliance Research Institute, as a result, decoloring degree is decreased by 39% by selecting ColorAlive program.



## DECOLORING DEGREE DECREASED BY 39%



\* T&C Apply; Tested under standard lab conditions.

# REAL INVERTER™



**INVERTER MOTOR IS  
QUIET (10% LESS NOISE)**



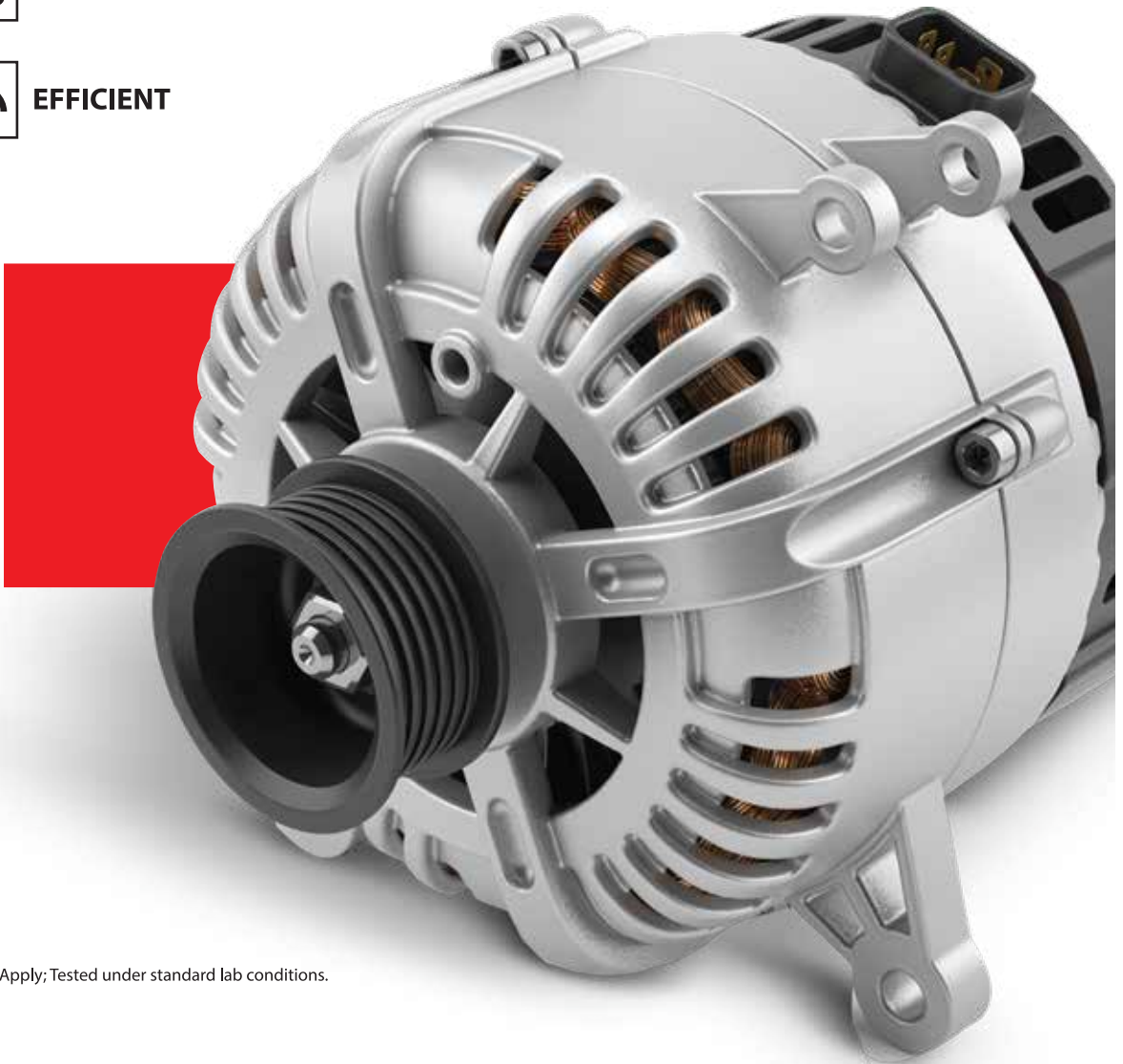
**10 YEAR WARRANTY**



**DURABLE**



**EFFICIENT**



\* T&C Apply; Tested under standard lab conditions.



# SAME LOADS™

Both the washer and the dryer have the same capacity. Get washing and drying done in just one go, without any hassle of reloading.



## LARGE INNER DRUM

Compared with the normal washer dryer, SameLoads™ technology expands volume of inner drum up to 25% by making drum deeper, which helps to effectively enhance drying capacity.



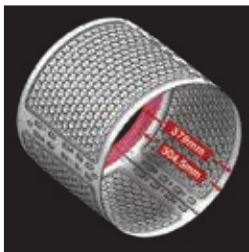
## SLEEK INVERTER MOTOR

The inverter motor is thinner than the normal motor, which also helps to save space for larger drying capacity.



## HIGHER SPIN SPEED

Unlike the normal Washer Dryer, SameLoads™ improves drying efficiency with up to 1600 rpm spinning speed, which helps to fold the fabric to improve the drying performance.





SOFTENER



DETERGENT

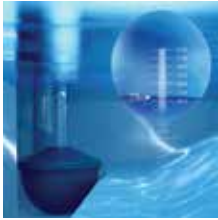
TOSHIBA

# SENSEDOSE™

Based on the integrated sensor, SenseDose™ technology calculates weight loads and the right amount of detergent accordingly (injection accuracy is up to  $\pm 1$  ml). Then it dispenses detergent automatically, which leads to no detergent residues and waste.



## 1 SENSE LOADS



## 2 CALCULATE AMOUNT OF DETERGENT



## 3 DOSE DETERGENT AND REMOVE STAINS



## SENSE SLIDE™

Toggle between modes using a water-proof slide bar. This bar can be operated with ease using wet hands as well.



## SENSE DRY

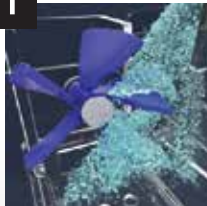
Sense dry technology can stop drying when clothes reach the fittest dryness, once sensing the best humidity. Humidity sensor is the core component to activate Sense dry.



# CYCLONEMIX™

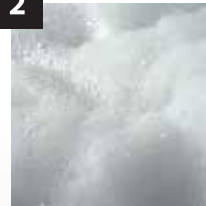
With impeller in the drawer, CycloneMix™ technology increases detergent dissolution, hence improves washing performance. Detergent dissolution rate is raised by about 20% compared to the washing machines which are without CycloneMix™.

1



**REVOLVING IMPELLER  
ACCELERATES  
DISSOLUTION  
OF DETERGENT**

2



**DETERGENT  
DISSOLVES  
BETTER**



# ADDITIONAL FEATURES

**45  
W&D**

## **45-MIN. TO WEAR**

Revolutionary washing & drying time, W&D finished in 45 min., clean & dry at ultra speed.



## **COLOR TFT**

Innovative user-friendly color display, wider high resolution screen for a better procedure monitoring.



## **360° SPRAY**

360° all around spray, accelerates detergent dissolution, cleans foam residues on door seal & glass.



## **WATERPROOF PANEL**

The washing machine is equipped with IPX4 front panel making it water proof. The panel can be be easily operated while washing.



## **10-MIN. SUPER FAST**

Fastest wash program in industry, finishes small loads in 10 min.



## **ERGO DESIGN**

Ergonomic design in seamless slope panel for comfort in operation.

# T07 SERIES



THE GREAT WAVES™



REAL INVERTER™



COLOR ALIVE



SAME LOAD™



SENSE SLIDE™



SENSEDOSE™



SENSE DRY



COLOR TFT



45-MIN.  
TO WEAR



550 MM  
MEGA DOOR



360° SPRAY



LED DRUM  
LIGHT



WATERPROOF  
PANEL



CYCLONEMIX™



16 WASH  
PROGRAMS



10-MIN.  
SUPER FAST



DRUM  
CLEAN



ANTI-BACTERIA  
GASKET



ERGO DESIGN

Available in 8kg Capacity





# T03 SERIES



THE GREAT WAVES™



CYCLONE MIX™



ANTI ALLERGY



WATERPROOF PANEL



ERGO DESIGN



REAL INVERTER™



490MM WIDE DOOR



12 WASH PROGRAMS



ANTI BACTERIA GASKET



COLOR ALIVE



15' QUICK WASH



INTEGRATED CONTROL PANEL



DRUM CLEAN

Available in 8kg, & 9kg Capacity



# T01 SERIES



THE GREAT WAVES™



REAL INVERTER™



480 MM WIDE DOOR



16 WASH PROGRAMS



COLOR ALIVE



15-MIN. QUICK WASH



DRUM CLEAN



LED DISPLAY

Available in 7kg, 7.5kg, & 8kg Capacity



## TECHNICAL SPECIFICATIONS

SERIES	 <b>T07</b>	 <b>T03</b>
Model No.	TWD-BJ90W4-IND	TW-BJ100M4-IND
Capacity	8 Kg	9 Kg
Colour	Silver	White
No. of Programs	16	12
Motor	Real Inverter	Real Inverter
Wash Technology	The Great Waves	The Great Waves
Display	Color TFT	LED Digital
Integrated Control Panel	√	√
Cold Wash	√	√
Color Alive	√	√
Quick wash	10'	12'
Cyclone Mix	√	√
Sense Dose	√	
Same Load	√	
Sense Slide	√	
Anti Bacteria Gasket	√	√
LED Drum Light	√	
Drum Clean	√	√
Door Size	550 mm Mega Door	490 mm Wide Door
Max. RPM (Spin)	1400	1400
Temperature Range (°C)	20-30-40-60-90	20-30-40-60-90
Power Supply	220-240V; 50Hz	220-240V; 50Hz
Rated Power (W)	2050 W	2000 W
Noise Level (Wash/Spin)db	58/77 db	56/67 db
Net Weight (Kg)	72 Kg	71 Kg
Dimensions (W*D*H)mm	595*565*850	615*595*850



**T01**

TW-BJ90M4-IND	TW-BJ90S2-IND	TW-BJ85S2-IND	TW-BJ80S2-IND
8 Kg	8 Kg	7.5 Kg	7 Kg
White	White	Silver	White
12	16	16	16
Real Inverter	Real Inverter	Real Inverter	Real Inverter
The Great Waves	The Great Waves	The Great Waves	The Great Waves
LED Digital	LED Digital	LED Digital	LED Digital
√			
√	√	√	√
√	√	√	√
12'	15'	15'	15'
√			
√	√	√	√
√			
490 mm Wide Door	480 mm Wide Door	480 mm Wide Door	480 mm Wide Door
1400	1200	1200	1200
20-30-40-60-90	20-40-60-90	20-40-60-90	20-40-60-90
220-240V; 50Hz	220-240V; 50Hz	220-240V; 50Hz	220-240V; 50Hz
1900 W	1900 W	1900 W	1900 W
56/67 db	56/78 db	56/78 db	56/78 db
68 Kg	68 Kg	61 Kg	61 Kg
615*595*850	530*595*850	530*595*850	600*595*850

## SALIENT FEATURES SEMI-AUTOMATIC

### TRANSPARENT LID:

See-through lid for process check.

### DOUBLE WATER INLETS:

Water inlets from both sides (left/right).

### ULTRASPIN:

Air flow accelerates dewatering.

### GOLDEN SOAK PERIOD:

Clean better with soaking, 5-min. in summer.

### MULTI-FUNCTION PANEL:

Comfortable design with ergonomic high panel, easy kit for putting keys, coins, cellphone, washing powder, etc. Open the lid easily with the golden handle.

### HIGH BLADES PULSATOR:

Water flows in two opposite directions to enhance cleaning result.



# H01 SERIES



OCTA  
PULSATOR



CYCLONE SPIN  
WASH



GOLDEN  
HANDLE



MAGIC  
FILTER



EASY KIT



RUST FREE  
BODY

Available in 7.5kg, 10.5kg & 12.5kg Capacity

## TECHNICAL SPECIFICATIONS

Model No.	VH-J85W-IND	VH-J115W-IND	VH-J135W-IND
Capacity (Kg.)	7.5	10.5	12.5
Dimensions (W*D*H) mm	761*448*1000	870*512*1045	902*537*1075
Power Supply	220~240V, 50Hz	220~240V, 50Hz	220~240V, 50Hz
Net Weight (Kg.)	20.5	26	30
Noise Level (Wash/Spin) db	65/75	65/75	65/75



# TOSHIBA

**Midea India Pvt. Ltd.**

1st Floor, Pearl Tower, Plot No. 51, Institutional Area,  
Sector 32, Gurgaon - 122001, Haryana, Ph: 0124-6144300

Terms & Conditions Apply:

Images shown are for reference only, actual product may vary. For private circulation only.  
Features are subject to change without any prior notice. Meant for reference purpose. This is  
not an advertisement. For more information visit:

 [www.facebook.com/toshibalifestyleindia](https://www.facebook.com/toshibalifestyleindia)  [@toshibalifestyle](https://twitter.com/toshibalifestyle)  [toshibacare@midea.co.in](mailto:toshibacare@midea.co.in)  
website: [in.toshiba-lifestyle.com](https://in.toshiba-lifestyle.com)

 **1800 4191 111**