



EN ■ Glass Jug Blender

Glass Jug Blender

Important safety instructions

READ CAREFULLY AND STORE FOR FUTURE USE.

- This appliance may be used by persons with physical or mental impairments or by inexperienced persons, if they are properly supervised or have been informed about how to use the product in a safe manner and understand the potential dangers.
- Children must not use this appliance or play with it. Keep this appliance and the power cord out of reach of children.
- The appliance is designed for household use only. It is not intended for use in locations such as:
 - staff kitchens in stores, offices and other workplaces;
 - hotel or motel rooms and other living areas;
 - agricultural farms;
 - bed and breakfast establishments.
- This appliance is designed for blending food. Do not use it for any other purposes than those intended.



Warning:

Incorrect use may lead to injuries.

- Do not use the appliance in an industrial environment or outdoors.
- Before connecting this appliance to a power socket, make sure the rated voltage stated on its rating label corresponds to the voltage in your power socket.
- Do not place the appliance on an electric or gas stove or in its vicinity, on the edge of a table or on an unstable surface. Only place the appliance on an even, dry and stable surface.
- Only use the appliance with the original accessories that came with it.
- When filling, do not exceed the maximum capacity level marked on the jug.
- Make sure that the appliance is properly assembled before putting it into operation. The appliance is equipped with a safety mechanism that will prevent it from being started unless the removable accessories are seated on the motor unit.



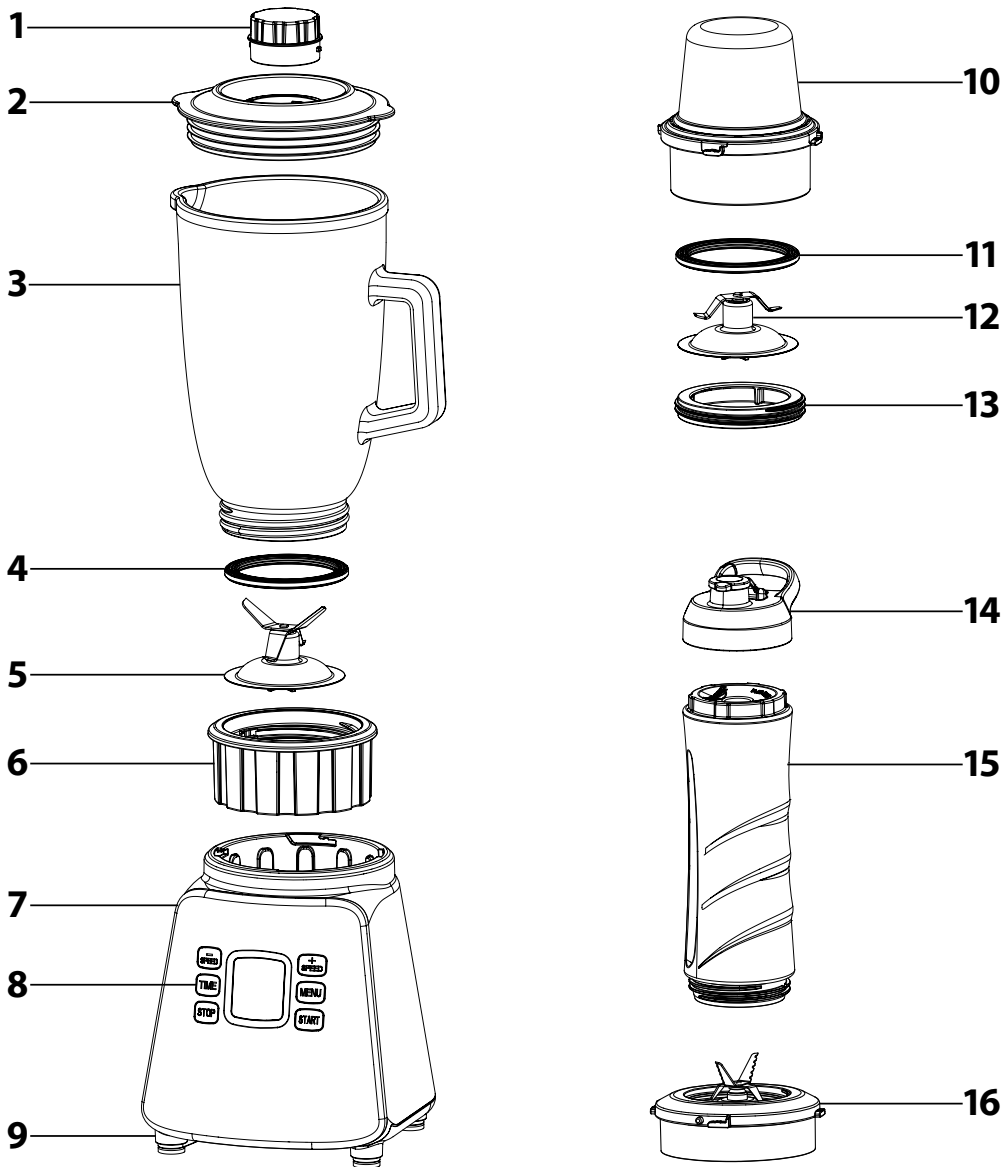
Warning:

Never start the blender unless the outer lid of the blending jug is properly secured to the blending jug.

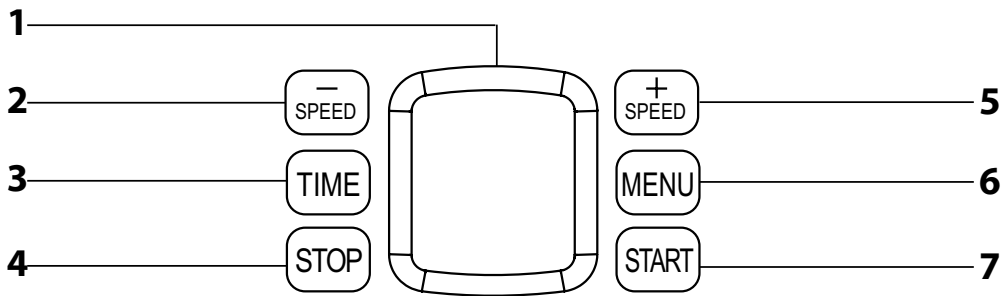
- Prior to blending fruit or vegetables, remove hard stones that are contained in, for example, apricots, peaches, mangoes, avocados, etc., and inedible peels from, for example, oranges, mandarins, pineapples, melons, etc. Remove shells from nuts and bones from meat.
- Be especially careful when handling hot liquids and foodstuffs. Hot steam or splashing hot foods and liquids may cause scalding. Do not fill the blending jug with liquids hotter than 80 °C. For reasons of safety, it is recommended to allow hot liquids and ingredients to cool down before blending them.
- Avoid contact with hot surfaces. Use the handle to carry the blending jug.
- While blending, use your hand to hold down the blending jug from above.
- While blending, you may add ingredients into the blending jug through the hole in the outer lid.
- Do not put your hands or items such as kitchen knives, forks or wooden spoons into the blending jug while it is attached to the motor unit.
- After 2 minutes of operation leave the appliance to cool down for 5 at least minutes. When processing hard ingredients or very thick liquids, allow the appliance to cool down already after 1 minute of operation.

- The appliance is equipped with a thermal fuse protecting the motor from damage in case of overload. If the appliance shuts off as a consequence of the motor being overloaded, disconnect it from the power socket and allow it to cool down for at least 30 minutes. Then you may continue using it.
- Do not turn on the appliance when it is empty. Incorrect use of the appliance may negatively affect its lifetime.
- If ingredients stick to the blade assembly or the inside walls of the blending jug, turn the appliance off and unplug it from the power supply. Make sure that the blade assembly has stopped rotating. Carefully remove the blending jug from the motor unit. Open the lid and, using a spatula, clean the blade assembly and the walls of the blending jug. Properly close the lid and seat the blending jug back on to the motor unit. Plug the power cord into a power socket and then you may continue blending.
- When handling the blade assembly, be very careful not to injure yourself on its sharp cutting edge. This applies especially when removing the blade assembly from the respective jug, when emptying the jug and when cleaning.
- The included jugs are not intended for heating food in a microwave or for long-term food storage.
- Always turn off the appliance and disconnect it from the power socket when not be using it and when leaving it without supervision, before changing accessories, before assembling, disassembling, cleaning and moving it.
- Check that the motor unit is turned off, disconnected from the power socket and that the rotating parts have come to a complete stop before removing the removable accessories from the motor unit.
- Clean it according to the instructions in chapter Cleaning and maintenance. Do not submerge the motor unit and its power cord in water or any other liquid, or wash these parts under running water.
- Ensure that the power plug contacts do not come into contact with moisture. Do not place heavy items on the power cord. Make sure that the power cord does not hang over the edge of a table or that it is not touching a hot surface.
- Disconnect the appliance from the power socket by pulling on the plug, never pulling on the power cord. Otherwise, this could damage the power cord or the socket.
- If the power cord is damaged, it must be replaced by an authorised service centre or by another similarly qualified person, this will prevent the creation of a dangerous situation. It is forbidden to use the appliance if it has a damaged power cord.
- Do not use the appliance when it is not functioning properly or showing any signs of damage. In order to prevent a hazardous situation arising, do not repair the appliance yourself or modify it in any way. Have all repairs performed at an authorised service centre. By tampering with the appliance, you risk voiding your legal rights arising from unsatisfactory performance or quality warranty.

A



B



- Prior to using this appliance, please read the user's manual thoroughly, even in cases, when one has already familiarised themselves with previous use of similar types of appliances. Only use the appliance in the manner described in this user's manual. Keep this user's manual in a safe place where it can be easily retrieved for future use.
- We recommend saving the original cardboard box, packaging material, purchase receipt and responsibility statement of the vendor or warranty card for at least the duration of the legal liability for unsatisfactory performance or quality. In the event of transportation, we recommend that you pack the appliance in the original box from the manufacturer.

DESCRIPTION OF THE APPLIANCE

- | | |
|-------------------------------------------------------------------------------------------------------------------------|---------------------------------------------------------------------------------------------------------------------------------|
| A1 Inner cap can be used to add ingredients to the blending jug while the blender is running. | A7 Motor unit |
| A2 Outer lid with a hole After removing the cap you may add ingredients into the blending jug while blending. | A8 Control panel with display |
| A3 Glass blending jug with 1.5 l capacity | A9 Anti-slip feet |
| A4 Gasket ring | A10 Grinding jug |
| A5 Blade assembly of the blending jug with a 4-blade titanium coated stainless steel blade assembly | A11 Gasket ring |
| A6 Blending jug base | A12 Grinding blade assembly with 2 stainless steel blades |
| | A13 Locking ring |
| | A14 Cap with drinking spout |
| | A15 Smoothie drinks bottle with 600ml capacity |
| | A16 Smoothie drinks bottle blade assembly with safety tabs with a 4-blade titanium coated stainless steel blade assembly |

DESCRIPTION OF THE CONTROL PANEL WITH DISPLAY

- | | |
|---------------------------------------------------------------------------------------------------------------|--------------------------------------------------------------------------|
| B1 LCD display shows the speed, remaining time until end of operation and the set blending program. | B4 STOP button it is used to stop the appliance. |
| B2 SPEED- button it is used to set the speed. | B5 SPEED+ button it is used to set the speed. |
| B3 TIME button it is used to set the blending time. | B6 MENU button it is used to select a preset blending program. |
| | B7 START button it is used to start the blender. |

PURPOSE OF USE

- BLENDER**
 - It is designed for blending meals and drinks such as creamy soups, sauces, cocktails, spreads, baby food, etc.
- GRINDER**
 - It is designed for grinding nuts, herbs, spices and coffee beans.
- SMOOTHIE BLENDER**
 - It is ideal for making nutritious smoothie drinks, milkshakes, cocktails, etc.

BEFORE FIRST USE

- Remove all packaging materials, including promotional tags and labels from the appliance and its accessories.
- Thoroughly wash the removable accessories that are intended to come into contact with food using warm water and a neutral kitchen detergent. Then rinse them with clean water and allow them to dry naturally or dry them out thoroughly using a wiping cloth. All removable parts except for the blade assembly **A5**, **A12** and **A16** can be washed in a dishwasher (in the upper rack).
- Do not rinse the motor unit **A7** under water or submerge it in water.



Attention:

When cleaning, be very careful not to injure yourself on the sharp edge of the blade assembly **A5**, **A12** or **A16**.

ASSEMBLING AND DISASSEMBLING THE APPLIANCE

- Before you start assembling or disassembling the appliance, check that the motor unit **A7** is turned off and disconnected from the power socket and that the rotating parts have come to a complete stop.
- Place the motor unit **A7** on a stable, even, dry surface, for example on a kitchen countertop.

1. BLENDER

- 1.1 Place the gasket ring **A4** on to the blade assembly **A5** and insert it into the base **A6** from above. Attach the base **A6** to the bottom part of the blending jug **A3** by screwing it anticlockwise.
- 1.2 Seat the outer lid **A2** on to the neck of the blending jug **A3** and push it down properly so that it adheres to the neck along its entire perimeter. Insert the inner cap **A1** into the outer lid **A2**.

- 1.3 Place the blending jug assembled in this way on to the motor unit **A7** from above. The blender is equipped with a safety mechanism that will prevent it from being started unless the blending jug **A3** is properly mounted on the motor unit **A7**.
- 1.4 To disassemble, proceed in the reverse sequence.

2. GRINDER

- 2.1 Turn the grinding jug **A10** so that the opening faces upwards. Place the gasket ring **A11** on to the blade assembly **A12** and then insert it into the grinding jug **A10** with the blades facing forward. Attach the blade assembly **A12** to the grinding jug **A10** by turning the locking ring **A13** anticlockwise all the way.
- 2.2 Turn the assembled grinding jug over so that the locking ring **A13** is on the bottom. Seat it on the motor unit **A7** from above and then turn it clockwise to secure it on the motor unit **A7**. The blender is equipped with a safety mechanism that will prevent it from being started unless the grinding jug is properly attached to the motor unit **A7**.
- 2.3 To disassemble, proceed in the reverse sequence.

3. SMOOTHIE BLENDER

- 3.1 Place the blade assembly **A16** on to the neck of bottle **A15** so that the blades are pointing into the bottle **A15**. Screw in the blade assembly **A16** clockwise. The unit must be tightened in such a way that the safety tabs slide in. Otherwise, it will not be possible to install it into the blender.
- 3.2 Turn the assembled bottle over so that the blade assembly **A16** is on the bottom. Seat it on the motor unit **A7** from above and then turn it clockwise to secure it on the motor unit **A7**. The blender is equipped with a safety mechanism that will prevent it from being started unless the bottle is properly attached to the motor unit **A7**.



Note:

The bottom of the bottle **A15** has a thread to which a cap **A14** can be attached so that you can have it with you at all times.

- 3.3 To disassemble, proceed in the reverse sequence.

4. SMOOTHIE DRINKING BOTTLE

- 4.1 Screw the cap **A14** on to the neck of the bottle **A15** and tighten firmly. When carrying it, make sure that the drinking spout is properly closed so as not to spill the contents of the bottle **A15**.
- 4.2 To disassemble, proceed in the reverse sequence.

OPERATING THE APPLIANCE

1. Make sure that the motor unit **A7** is turned off and disconnected from the mains power socket. Select the correct type of accessory depending on the purpose of use. Place the ingredients that you wish to process into the respective jug/bottle, and assemble the appliance according to the instructions provided in chapter Assembling and disassembling the appliance. When the appliance is properly assembled, connect the motor unit **A7** to a power socket. When it is connected to a power socket, the appliance will switch to the stand-by mode.



Attention:

Do not fill any jug/bottle past the maximum mark.

To achieve optimal results, the blending jug **A3** should be filled to at least ¼ of its capacity.

2. To quickly start the appliance, press the START button **B7**. The operating time is preset to 30 seconds and blending is set to medium speed. The display **B1** shows the speed level and the preset time. The speed can be increased or decreased using buttons **B2** and **B5**. The appliance will automatically stop once the preset time has elapsed. To stop it while it is still running, press the STOP button **B4**.
3. In the stand-by mode, button **B3** can be used to first set the blending time. When button **B3** is pressed for the first time, the time 10 s will appear on the display **B1**. Each time the button **B3** is pressed again, time is increased by another 10 seconds. After reaching 60 s, the time setting will return to the beginning. Use buttons **B2** and **B5** to set the desired speed. To start the appliance, press the START button **B7**. The display **B1** will show the set speed and time will count down until the end of operation. The appliance will automatically stop once the set time has elapsed. To stop it while it is still running, use the STOP button **B4**.
4. To select a preset program, use the MENU button **B6**. The list of programs will appear on the display **B1** and the icon of the current selected program will flash. Each time the button is pressed, the program setting will change. To start the appliance, press the START button **B7**. The display **B1** will show the selected blending program. In a preset program, the blending time and speed are automatically set. The appliance will automatically stop once the preset time has elapsed. To stop the appliance while it is still running, press the STOP button **B4**.

| Preset program | Purpose of use |
|----------------|-----------------------------------------------|
| | To make flour |
| | To crush ice and blend frozen foods |
| | To blend creamy soups, sauces, etc. |
| | To make cocktails, smoothie drinks, etc. |
| | To grind nuts, herbs, spices and coffee beans |

**Attention:**

After 2 minutes of operation leave the appliance to cool down for 5 at least minutes. When processing hard ingredients or very thick liquids, allow the appliance to cool down already after 1 minute of operation.

- If ingredients stick to the blade assembly **A5** or the inside walls of the blending jug **A3**, switch off the appliance and unplug it from the power supply. Make sure that the blade assembly **A5** has stopped rotating. Carefully remove the assembled blending jug from the motor unit **A7**. Open the lid and use a plastic spatula to clean the blade assembly **A5** and the walls of the blending jug **A3**. Close the lid and seat the assembled blending jug back on to the motor unit **A7**. Plug the power cord into a power socket and continue blending.
- After you have finished using the appliance, turn it off and disconnect the power cord from the power socket. Make sure that the rotating parts have stopped and take the removable accessories off the motor unit **A7**.
- When you have emptied out the jug, clean out all parts that were used according to the instructions in chapter Cleaning and maintenance.

ADVICE AND TIPS FOR BLENDING

- First cut food with a firm consistency such as fruit and vegetables into smaller pieces measuring 2 to 3 cm and only then blend it.
- First, blend a part of the ingredients. Then gradually add the remaining ingredients through the hole in the lid **A2** while blending. In this way, you will achieve better results than by adding all ingredients into the blending jug **A3** at once.
- If you need to blend ingredients of a solid consistency together with liquids, we recommend that you first blend the ingredients of solid consistency and a part of the liquids. Then gradually add the remaining liquids through the hole in the lid **A2** while blending.
- Ice cubes must be blended immediately upon being removed from the freezer. When they start to melt, they will stick together and it will not be possible to blend them.

QUICK GUIDE TO PROCESSING INGREDIENTS

| Ingredients | Recommended speed setting | Recommended blending time |
|--------------------------------------------------------------------------------------------------------|---------------------------|---------------------------|
| Blending of very soft and soft ingredients (oranges, tomatoes, bananas, etc.), liquids, etc. | Low | 30–60 s |
| Blending spreads, creamy soups, viscous sauces, harder ingredients such as raw carrots, beetroot, etc. | Medium | 30–45 s |
| Grinding nuts, coffee beans, spices, ice cubes, etc. | High | 15–30 s |

CLEANING AND MAINTENANCE

- Before cleaning it, make sure that the appliance is turned off, disconnected from the power socket and that the rotating parts have stopped.
- Disassemble the appliance into its individual parts. Thoroughly wash removable accessories using warm water and neutral kitchen detergent. Then rinse them with clean water and dry thoroughly with a fine wiping cloth. All removable parts except for the blade assembly **A5**, **A12** and **A16** can be washed in a dishwasher (in the upper rack).

**Attention:**

When cleaning, be very careful not to injure yourself on the sharp cutting edge.

- When you have finishing using it, it is also possible to clean the blending jug **A3** and the bottle **A10** by filling it with half a litre of clean water and a few drops of neutral kitchen detergent and then running it for 15 to 20 seconds. Then turn off the appliance, disconnect it from the power socket, and disassemble it after the rotating parts stop. Then thoroughly rinse the blending jug **A3** or bottle **A10** with clean water and wipe dry.
- To clean the outer surface of the motor unit **A7**, use a cloth lightly dipped in a weak detergent solution. After applying the detergent, wipe the surface with a cloth lightly dampened in clean water and then wipe dry.
- Never submerge the motor unit **A7** or the power cord in water or in any other liquid.
- Do not use solvents, cleaning products with an abrasive effect, etc. to clean the appliance. Otherwise the surface coat of the appliance may be damaged.

STORAGE

- When not be using the appliance, store it in a dry place out of children's reach.

TECHNICAL SPECIFICATIONS

| | |
|----------------------------------------|-----------|
| Rated voltage range..... | 220–240 V |
| Rated frequency..... | 50/60 Hz |
| Rated power input..... | 800 W |
| Electrical shock protection class..... | II |
| Noise level..... | 85 dB(A) |

The declared noise emission level of the appliance is 85 dB(A), which represents a level A of acoustic power with respect to a reference acoustic power of 1 pW.

Explanation of technical terminology

Safety class for electrical shock protection:

Class II – Electrical shock protection is provided by double or heavy-duty insulation.

Changes to text and technical parameters are reserved.

INSTRUCTIONS AND INFORMATION REGARDING THE DISPOSAL OF USED PACKAGING MATERIALS

Dispose of used packaging material at a site designated for waste in your municipality.

DISPOSAL OF USED ELECTRICAL AND ELECTRONIC EQUIPMENT

This symbol on products or original documents means that used electric or electronic products must not be added to ordinary municipal waste. For proper disposal, renewal and recycling hand over these appliances to determined collection points. Alternatively, in some European Union states or other European countries you may return your appliances to the local retailer when buying an equivalent new appliance.

Correct disposal of this product helps save valuable natural resources and prevents potential negative effects on the environment and human health, which could result from improper waste disposal. Ask your local authorities or collection facility for more details.

In accordance with national regulations penalties may be imposed for the incorrect disposal of this type of waste.

For business entities in European Union states

If you want to dispose of electric or electronic appliances, ask your retailer or supplier for the necessary information.

Disposal in other countries outside the European Union

This symbol is valid in the European Union. If you wish to dispose of this product, request the necessary information about the correct disposal method from the local council or from your retailer.



This product meets all the basic requirements of EU directives related to it.